



**HOT WATER CIRCULATION  
RANGE  
JCR**

# HOT WATER

## Circulation pump



### Technical data

Single phase  
Continuous heavy duty rated  
Max. liquid temperature: 110°C  
Noise: <45dB  
Insulation: Class F  
Protection class: IP44

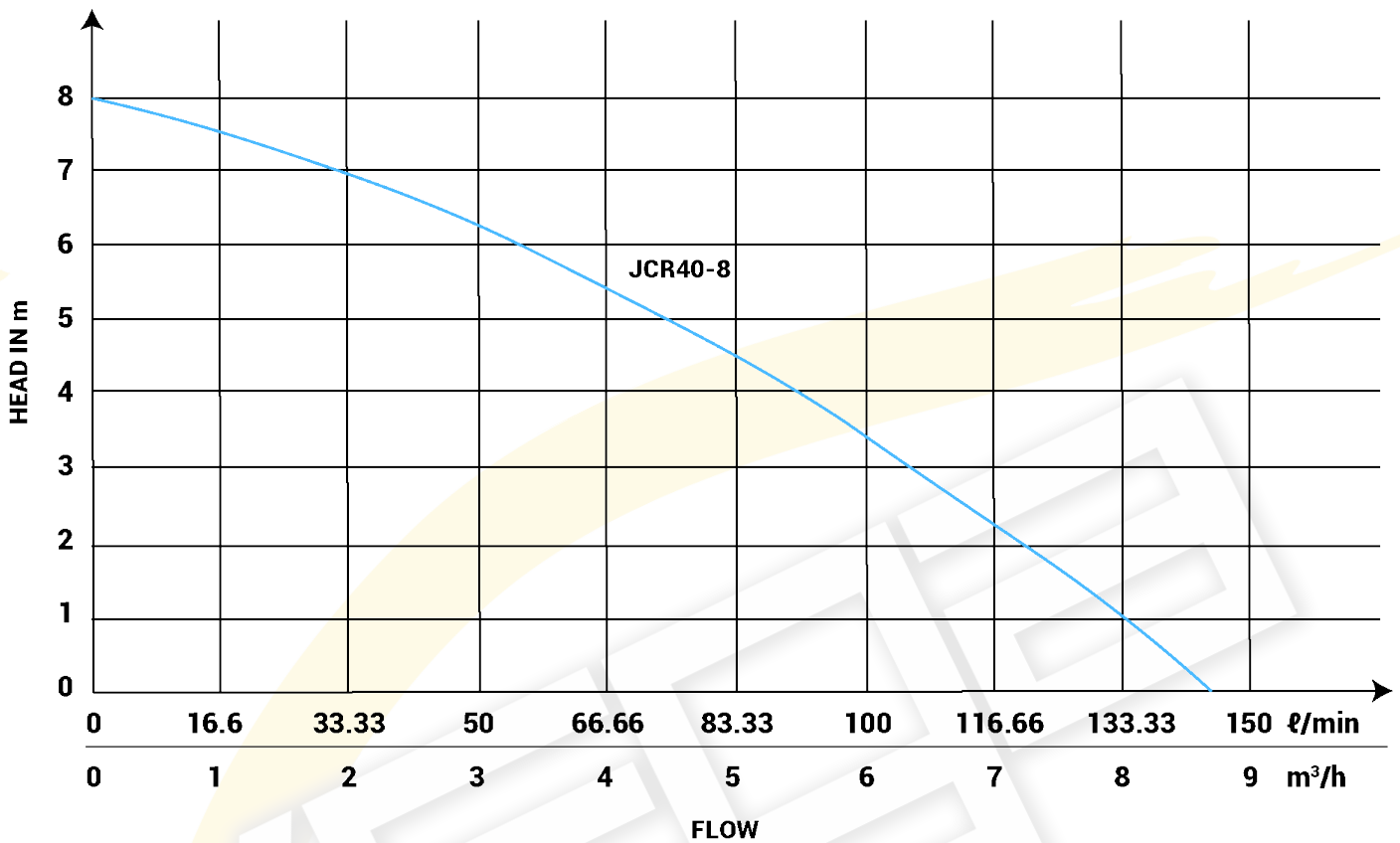
### Materials of construction

Pump body: Cast Iron  
Impeller: PA66/Stainless Steel  
Stator Housing: Aluminium  
Motor wire: 100% Copper  
Shaft: Ceramic  
Bearing: Ceramic  
Rotor: Copper wire

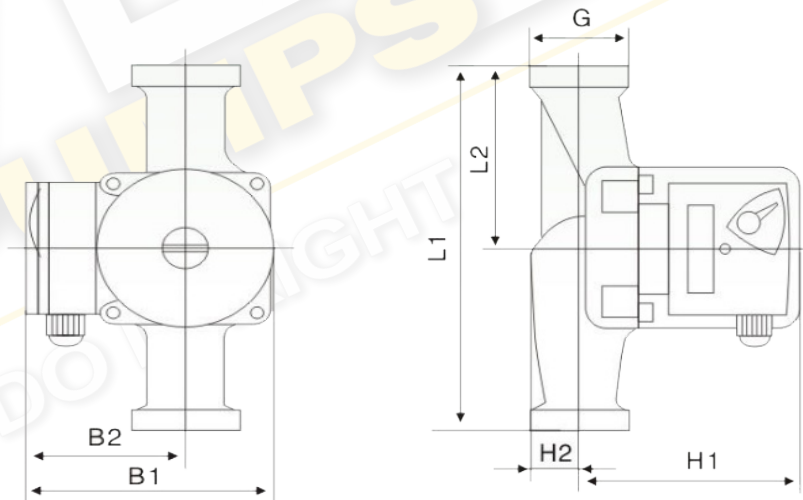
**Threaded unions are included with the purchase of this product.**

### Performance data

MODEL	INPUT POWER	VOLTAGE	INLET & OUTLET SIZE	SPEED	MAX. FLOW	MAX. HEAD
	(W)	(V/Hz)	(mm)	(r/min)	(L/min)	(m)
JCR40-8-370G	370	220 /50Hz	40	2860	145	8



## Dimensions



MODEL	G	L1	L2	H1	H2	B1	B2
	(inch)	(mm)	(mm)	(mm)	(mm)	(mm)	(mm)
JCR40-8-370G	1½"	180	65	108	29	125	80

# HOT WATER

## Circulation pump



### Applications

The UPS Hot Water Circulation pump is designed for circulation of liquids in heating and air-conditioning systems. Examples of typical applications include hot water service systems, underfloor heating systems, hot water circulation systems, solar hot water circulation systems, etc.

### Operating Conditions

Max. Flow: 10m<sup>3</sup>/h  
Max. Head: 12m

### Limits of use

Liquid temperature: +2°C~+110°C  
Maximum ambient temperature: +40°C  
Maximum system pressure: 10 bar  
Protection Level: IP44  
Mains connection: 220V/50Hz  
Insulation class: H  
Pumped liquid characteristics:

Clean liquids, free from solids and mineral oils, non-toxic, chemically neutral, close to the characteristics of water.

Installation: The motor shaft must be kept in the horizontal position; therefore the unit must be installed on a vertical pipeline.

pH: 6.5 to 8.5

**Threaded unions are included with the purchase of this product.**

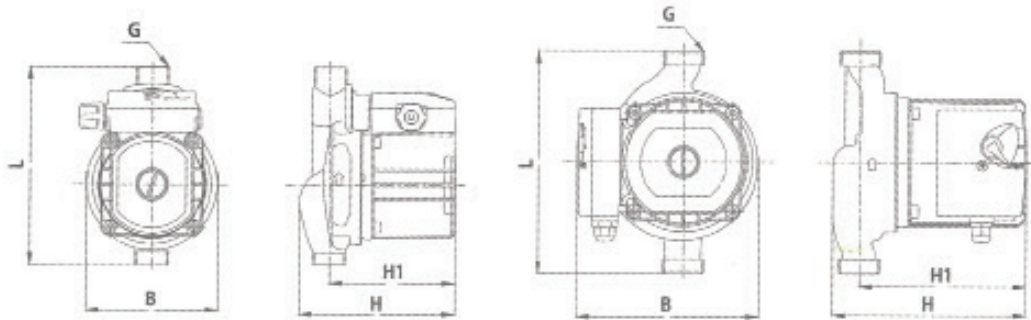


### Technical Data

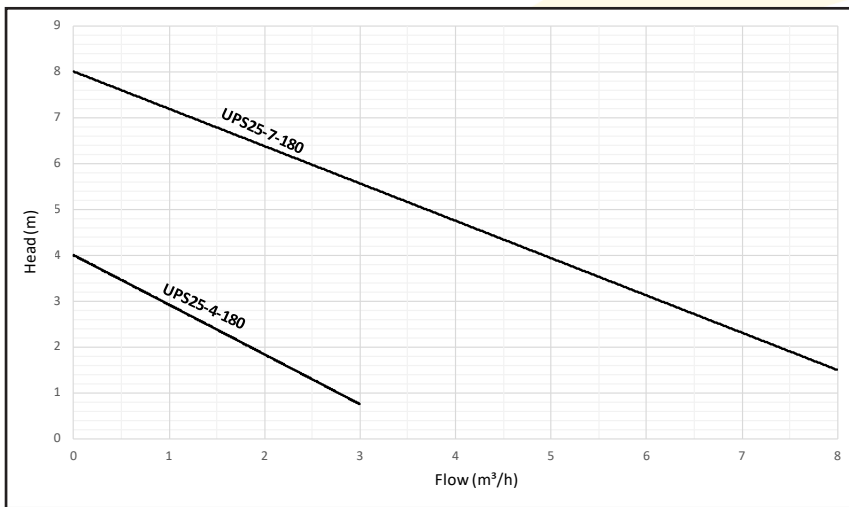
Model	Dim. (mm)					Unions	N.W. (kg)
	H	H1	L	G	B		
UPS25-4-180	130	105	180	G1 ½"	130	G1 ½" to G1"	3
UPS25-7-180	160	130	180	G1 ½"	150	G1 ½" to G1"	5

Model	Speed	Input Power (w)	Voltage	Max Head (m)	Max flow (m <sup>3</sup> /h)	G.W. (kg)
			(V/Hz)			
UPS25-4-180	3	60	220~240V/50Hz	4	3	3.0
	2	45				
	1	30				
UPS25-7-180	3	200	220~240V/50Hz	8	7	5.0
	2	185				
	1	145				

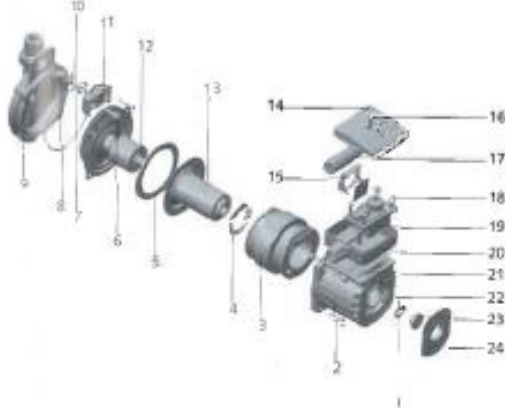
## Dimensions



## Performance Curve



## Diagram



No.	Component	Material
1	Nameplate	PA6
2	Air Clock	Brass
3	O-ring	EPDM
4	Hex Socket Screws	Steel
5	Stator Housing	Aluminium
6	Stator	/
7	Sealing Ring II	EPDM
8	Rotor Can	Stainless Steel
9	Sealing Ring I	EPDM

No.	Component	Material
10	Impeller	PES+GF
	Shaft	Ceramic
	Thrust Bearing	Graphite
	Radial Bearing	Ceramic
11	Pump Body	Cast iron
12	Terminal Box Cover	ABS
13	Capacitor	/
14	Circuit Board	/
15	Self-tapping Screw	Stainless Steel
16	Capacitor Bracket	ABS
17	Screws	Steel
18	Terminal Box Base	PA66G30
19	Terminal Box Sealing Gasket	EPDM

# HOT WATER CIRCULATOR

## Fitting Positions

