

USER MANUAL

1. OVERVIEW

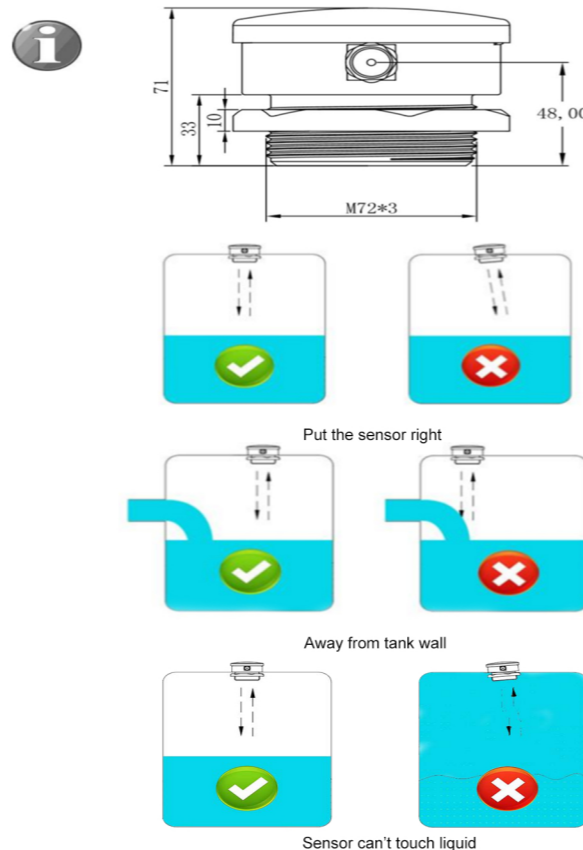
Thank you for purchasing the Wireless Ultrasonic Liquid Sensor with Tuya App Display. The ultrasonic level sensor measures the level without contact with the liquid. The sensor sends an ultrasonic signal, which is reflected back from the liquid surface. The fill level can thus be determined. The sensor can be used for oil and water tanks.



- ◆ Can be used for various liquids, since the ultrasonic sensor does not result in direct liquid contact
- ◆ Detect Range: 10cm to 2.9m can measure high tanks
- ◆ High and Low liquid alarm function
- ◆ Ideal for water/oil tanks
- ◆ Be able to monitor several tanks in one time.

2. MOUNT THE SENSOR ON THE TANK

The sensor should be in the middle of the tank and not on a liquid inlet. This can falsify the measurement result. Please refer to the following pictures for the best installation positions. The hole should be 72mm.



3. CONNECTION

- 1) Download "TUYA Smart APP" or "Smart Life APP" directly in the app store of mobile. Or scan the below code to download app. IOS and Android device are ok.



- 2) Led and button on sensor

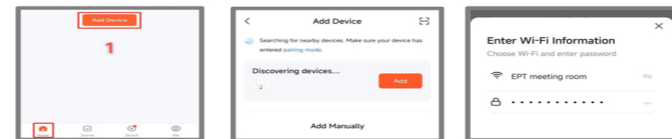
Red LED on/off: Power

Green LED on/off: wifi connection indicator

Press the button for 5s to connect wifi

Blue LED on/off: Mobile connection indicator;

- 3) Turn on the Bluetooth on the mobile phone and open the APP TUYA Smart or Smart Life.

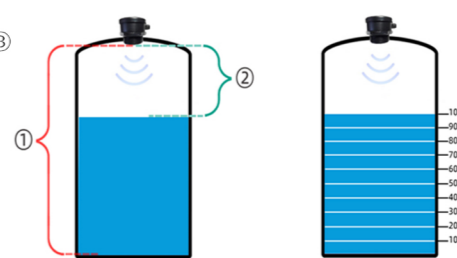
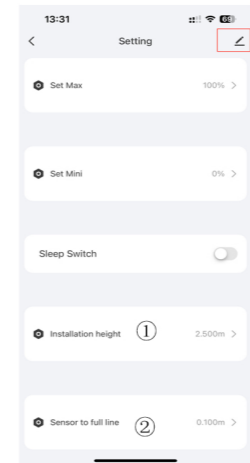


Click Home - Add Device Select Device Enter WiFi account password

Note: WIFI frequency can only be 2.4GHz, not 5GHz;

When adding device, make sure that the sensor and the mobile are connected to the same WIFI. After setting, the sensors must work under wifi. If the mobile phone can't find the device or fails to connect the device, please click the PCB button twice to add the device again or put the sensor close to router and try again.

4. SETTING



- 1) Installation height
- 2) Sensor to full line

- 1) Set Installation height ①

It is distance from sensor to tank bottom.

Note: The installation height is different with tank height because the sensor may be installed over the tank height.

The max installation height is 2.9 meters. If more than 2.9 meters, it is not suitable for this sensor.

- 2) Set sensor to liquid full line ②

It is distance from sensor to full line.

Note: The blind zone is 0.1 meter. It can't be smaller than 0.1 meter.

- 3) Set Max for full level alarm
- 4) Set Min for low level alarm

5) Optional Function

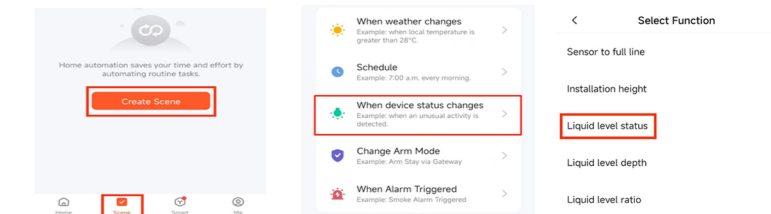
For Smart TLC2206-WF-S, it has sleep mode which can save battery energy. In sleep mode, the sensor detects liquid level for 28s for every 2 minutes.

- 6) Share to other device.

Click ③ to enter edit and choose Share Device

- 7) Set Alarm

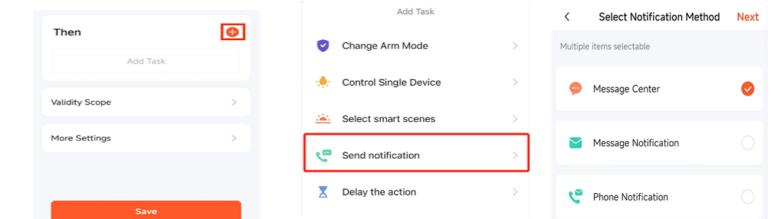
Go back to the home page, click "Scenes",



Create Scenes

When device status changes

Liquid level status



Click "+"

Send notification

Message Center - Save

Edit the scene name, and click "Confirm".