

1-ZONE SMART HOSE TIMER QUICK START GUIDE

! This Smart Hose Timer works with 2.4GHz WiFi network only.

01 Open RainPoint Home App

- **For Existing RainPoint app User**
Simply log into your account and skip to step 02.

If the hub (model # HWG023WRF) is already added in your device list on Home app, please skip to step 03.

- **For New User**
Search "RainPoint Home" on App Store or Google Play. Or scan the QR code below to download the app. Create an account to begin the setup.



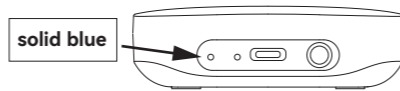
iOS



Android

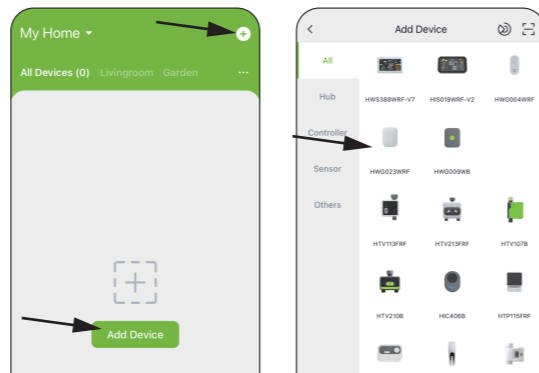
02 Connect to Wi-Fi Network

- Plug the hub into an indoor outlet and the power indicator will turn solid blue.

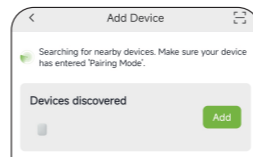


- Avoid to keep the hub on the floor or in a cupboard which might reduce the signal.

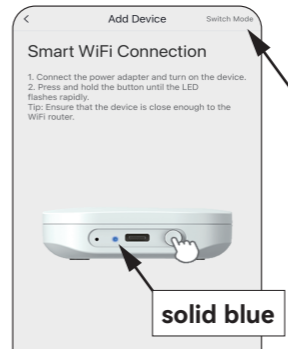
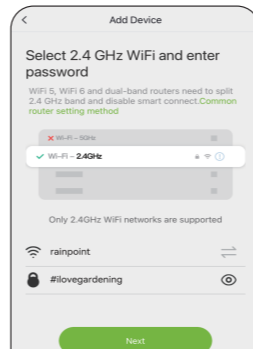
- Go to app's Home page, tap "Add Device" or **+** icon and select "HWG023WRF".



Or tap icon on Add Device page and scan QR code below.



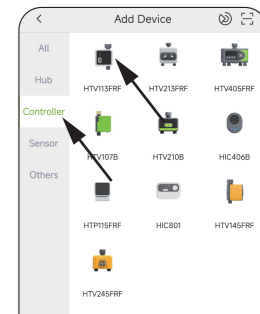
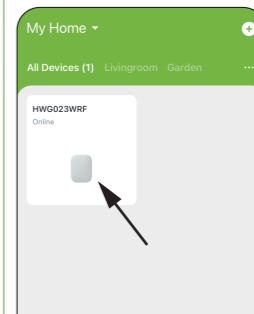
- Follow in-app instructions to complete the connection. Once the hub is connected to Wi-Fi successfully, the indicator will turn solid blue.



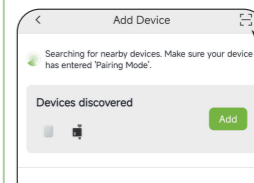
Note: If failed to connect the smart WiFi connection mode, please refer to user manual and try AP connection mode.

03 Add Smart Hose Timer

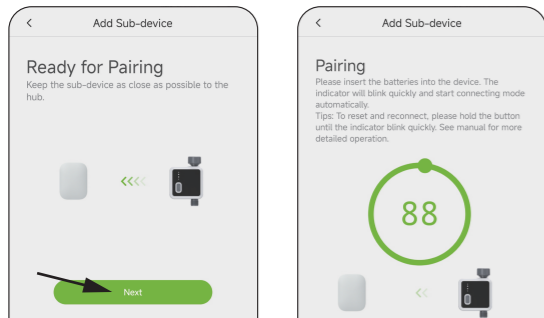
- Select hub device on app home page, touch "Add Device" on hub home page. Tap "Controller" category and then find "HTV113FRF".



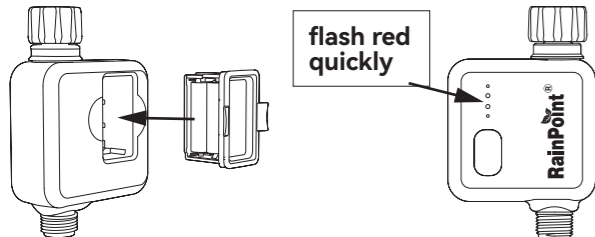
Or tap icon on Add Device page and scan QR code either below or the one on the timer.



b. Tap **Next** and move onto Pairing page.

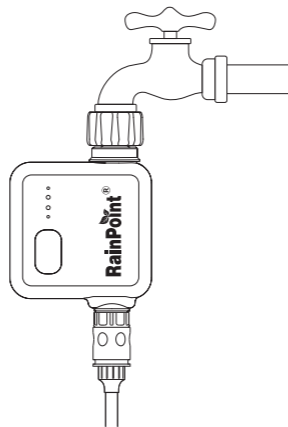


c. **Insert 4 new AA batteries** (NOT Included). And press and hold the Operation Button for 5 seconds until the indicator flashes red quickly. Then the timer will start pairing automatically.



! If automatic pairing fails, press and hold the **Operation Button** until the red indicator light flashes quickly to reactivate pairing mode manually.

04 Hose Timer Installation



NOTE:

- Install your hose timer as vertically to the ground as possible. Avoid material fatigue and Inaccurate water flow measurement caused by horizontal or angled connections.
- For better signal connection with the Wi-Fi hub, please do not place the timer in an underground valve box.

05 Timer Quick Test

- Install batteries and screw the hose timer into your spigot by hand. Tighten until snug.
- Keep the spigot fully closed.
- Press the **Operating Button** and the valve in the timer will open with a "click". After a few seconds, press the button again and it will close with another "click".
- Repeat the previous step three to five times.
- Open your spigot slightly and then follow step c to check that the water flows or shuts off as expected.
- If so, the timer is in good condition and rest assured to use. Otherwise, please repeat step c a few more times or contact us for support immediately.

Troubleshooting

Problem	Possible Reason	Solution
Timer can't connect	<ul style="list-style-type: none"> Unstable WiFi network. Long distance from the hub. Timer not in pairing state. 	<ul style="list-style-type: none"> Check if the WiFi network devices are working properly. Keep close to hubs and routers when connecting the timer. Re-pair the timer: Press and hold Operation Button until the red light flashes rapidly to indicate pairing. (Or remove the device from the home page and reconnect.)
Water leakage from the timer inlet	Pipe is not tightly inserted or not fully inserted.	<ul style="list-style-type: none"> Re-screw the timer to make sure the threaded joint between the water inlet and the spigot is properly tightened. Use the included sealing tape to improve the seal at the threaded joint.

Warranty

RainPoint provides 1-year limited warranty on this product against manufacturing defects in materials and workmanship. You can get an extra two years of extended warranty by registering your product on our website. www.rainpointonline.com

Need Help?

If you encounter any issues during setup, please feel free to email our customer support team.

Email: support@rainpointonline.com

Join Us For More Offers

Here are some gardening tips and tricks, as well as a lot of inspiration to help us become better gardeners.

Facebook: @Rainpointglobal

YouTube: RainPoint

Support:
<https://www.rainpointonline.com/pages/support>

