

# QUICK START GUIDE

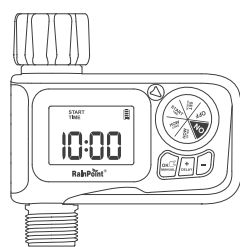
Watch how-to videos on YouTube, search @Rainpoint

## Need Help?

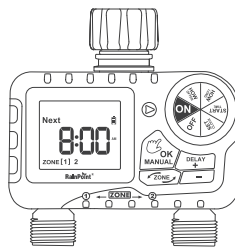
Scan the QR code for more help.



or Email:  
[support@rainpointonline.com](mailto:support@rainpointonline.com)



Model NO: ITV105



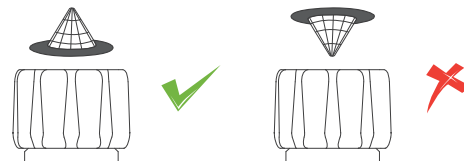
Model NO: ITV205



Support: <https://www.rainpointonline.com/pages/support>

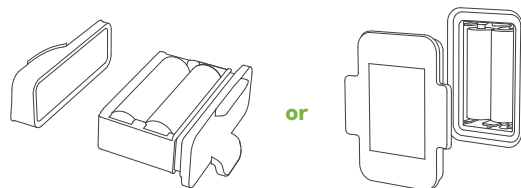
## 1 Check the water inlet filter

The filter prevents impurities from entering and blocking the valve, and its peripheral rubber ring seals the connection to prevent leaks. Please install the water inlet filter correctly as shown below.

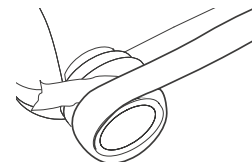


## 2 Insert the batteries correctly

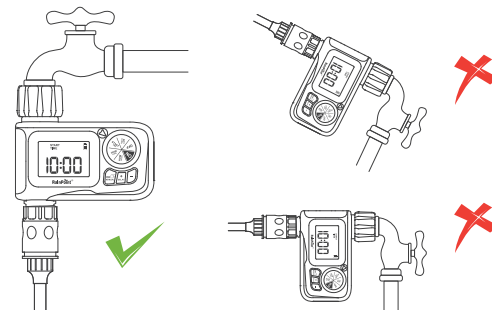
Requires 2 new 1.5V AA alkaline batteries. Insert them into the battery compartment as directed. Tightly close the battery compartment to ensure waterproofing.



## 3 Install the timer on the faucet



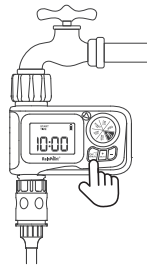
Wrap Teflon tape to the faucet's or hose's threads to avoid leakage.



Install the timer when the faucet is off and make sure the inlet is higher than outlets. Try to ensure the display vertical to the ground.

#### 4 Activate the timer valve before use

Keep the faucet off and turn the dial to "ON". Press and hold the "MANUAL" button to enter manual watering mode. When the display flashes, immediately press the "OK" button to open the valve. After hearing a "click" or 5 seconds, turn the dial to "OFF" to close the valve. Repeat the above operation 3~5 times. If the timer has 2 zone outlets, repeat the above for each outlet separately (press the "ZONE" button to switch zones).



\* Refer to the user manual for details.

#### 5 Check for water leaks before use

Keep away from the timer water outlet to avoid splashing water, and turn on the faucet gently.

##### Check:

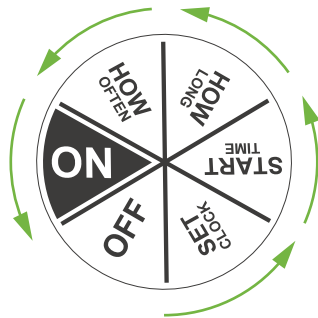
- Check the water inlet for leaks.
- Repeat step 4 to check if water flows out or closes when the valve is opened or closed.

#### 6 Congratulations!

You have completed the installation of the timer. Now please refer to the user manual to begin **programming your watering schedule**.

#### 7 5 steps to quickly program your watering plan

Turn the dial clockwise, from **OFF** to **SET CLOCK** to finish setting using buttons, and then set the plan in the order of **START TIME** → **HOW LONG** → **HOW OFTEN** → **ON**. Use "+" and "-" buttons to adjust and **OK** to switch between hours or minutes. Turn the dial clockwise after setting to save the changes and go to next STEP for each setting.



##### TIPS:

- ITV205 has two zones, please follow the steps below to set ZONE 1 and then set ZONE 2 (use "ZONE" button to switch zone).
- Refer to the user manual for more details and functions.

#### 8 Troubleshooting

Problem	Possible Cause	Possible Solution
The water inlet leak	<ul style="list-style-type: none"> <li>• No filter or not placed horizontally.</li> <li>• The faucet is not the standard 3/4".</li> </ul>	<ul style="list-style-type: none"> <li>• Add a filter and make sure it's placed horizontally in the inlet.</li> <li>• Make sure the faucet is a standard 3/4" faucet.</li> <li>• Wrap Teflon tape around the faucet to make it tight.</li> </ul>
The water won't stop /flow out	<ul style="list-style-type: none"> <li>• Long time storage and transportation make the valve inactive.</li> <li>• Valve clogged.</li> </ul>	<ul style="list-style-type: none"> <li>• Keep the tap turned off and turn the timer dial to ON.</li> <li>• Run the manual watering for 5-7s and stop it.</li> <li>• Repeat the Step 2 for 3 to 5 times.</li> <li>• Try to use it normally.</li> </ul>
Low water pressure	<ul style="list-style-type: none"> <li>• Filter blockage.</li> <li>• Inlet pressure not sufficient to support watering needs.</li> </ul>	<ul style="list-style-type: none"> <li>• Check if the filter is clogged, if so, clean or replace the filter.</li> <li>• Make sure the timer is properly installed and not cross-threaded.</li> <li>• Install a booster pump or other pressure increasing device.</li> </ul>

#### 9 Warranty

RainPoint provides a 1-year limited warranty on this product against manufacturing defects in materials and workmanship.

#### 10 Join Us For More Offers

Here are some gardening tips and tricks, as well as a lot of inspiration to help us become better gardeners.

Facebook: @Rainpointglobal

YouTube: RainPoint



Made in China



Not included



Points de collecte sur [www.quefairedelesdechets.fr](http://www.quefairedelesdechets.fr)  
Privilégiez la réparation ou le don de votre appareil !