

4-ZONE SMART HOSE TIMER QUICK START GUIDE

! This Smart Hose Timer works with 2.4GHz WiFi network only.

01 Open RainPoint Home App

- **For Existing RainPoint app User**
Simply log into your account and skip to step 02.

If the hub (model # HWG023WBRF) is already added in your device list on Home app, please skip to step 03.

- **For New User**

Search "RainPoint Home" on App Store or Google Play. Or scan the QR code below to download the app. Create an account to begin the setup.



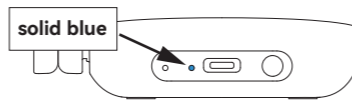
iOS



Android

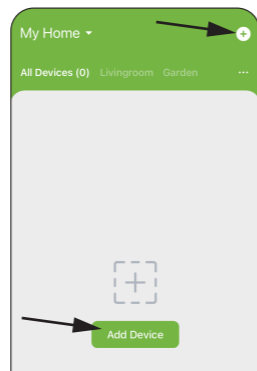
02 Connect to Wi-Fi Network

- a. Plug the hub into an indoor outlet and the power indicator will turn solid blue.

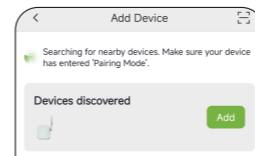


- !** Avoid to keep the hub on the floor or in a cupboard which might reduce the signal.

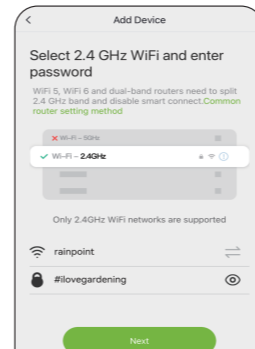
- b. Go to app's Home page, tap "Add Device" or **+** icon and select "HWG023WBRF".



Or tap icon on Add Device page and scan QR code below.



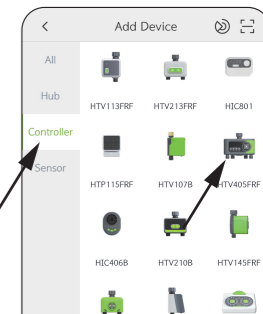
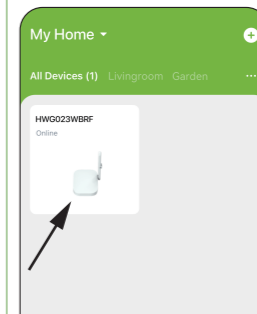
- c. Follow in-app instructions to complete the connection. Once the hub is connected to Wi-Fi successfully, the indicator will turn solid blue.



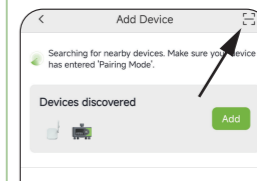
Note: If failed to connect the smart WiFi connection mode, please refer to user manual and try AP connection mode.

03 Add WiFi Water Timer

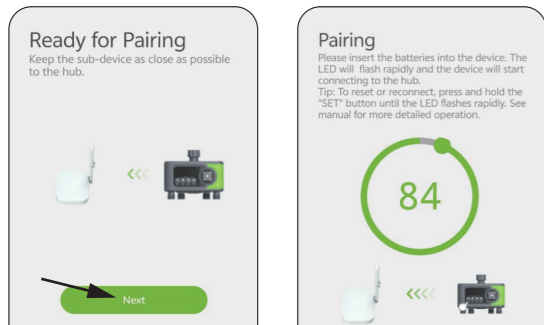
- a. Select hub device on app home page, touch "Add Device" on hub home page. Tap "Controller" category and then find "HTV405FRF".



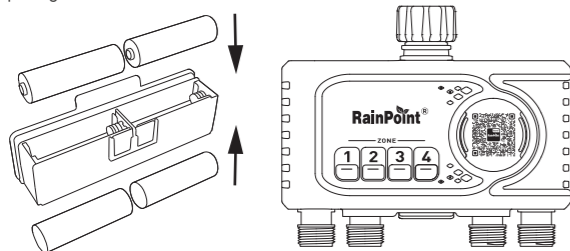
Or tap icon on Add Device page and scan QR code either below or the one on the timer.



b. Tap **Next** and move onto Pairing page.



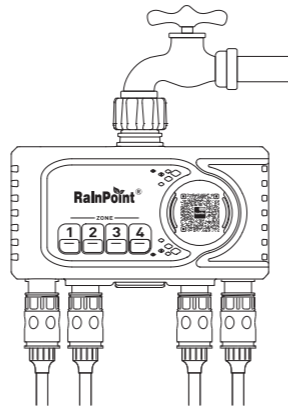
c. **Insert 4 new AA batteries** (NOT Included). Then press and hold the device button until the **RED** light flashes rapidly, indicating that the device is in pairing mode.



NOTE:

- Open the battery compartment cover of the timer.
- Close the battery compartment cover and press down firmly to ensure it is fully sealed.

04 Hose Timer Installation



NOTE:

- Install your hose timer as vertically to the ground as possible.
- Avoid material fatigue and inaccurate water flow measurement caused by horizontal or angled connections. For better signal connection with the Wi-Fi hub, please do not place the timer in an underground valve box.

05 Timer Quick Test

- Keep the faucet turned off.
- Press **Zone 1** button of the timer, with a "click" sound, the **Zone 1** valve opens for manual watering. After a few seconds, press the button again to close the valve.
- Open the faucet slightly and press **Zone 1** button on the timer to check if the water flows out or shuts off as expected. If yes, the valve is normal, please use it with confidence! If not, please repeat the above steps several times.
- Please follow the steps 2-3 to activate the **Zone 2/3/4** valves as well.

Troubleshooting

Problem	Possible Reason	Solution
Unable to open the valve.	<ul style="list-style-type: none"> Low battery. Debris in the inlet. Unstable network or response delay. 	<ul style="list-style-type: none"> Replace with new batteries. Regularly clean the debris in the filter to avoid interference with use. Wait a moment and try opening the valve again.
Timer cannot connect.	<ul style="list-style-type: none"> WiFi network is unstable. Too far from the gateway. Timer is not in pairing mode. 	<ul style="list-style-type: none"> Please check whether the WiFi network environment is functioning properly. When connecting to the irrigation timer, stay close to the gateway and router. Re-pair the timer: press and hold the timer button until the red light flashes quickly, indicating pairing (or remove the device from the homepage and reconnect).

For more troubleshooting/FAQs, please check the user manual. Or visit the website: www.rainpointonline.com/pages/support

Warranty

RainPoint provides 1-year limited warranty on this product against manufacturing defects in materials and workmanship. You can get an extra two years of extended warranty by registering your product on our website. www.rainpointonline.com

Need Help?

If you encounter any issues during setup, please feel free to email our customer support team.

Email: support@rainpointonline.com

Join Us For More Offers

Here are some gardening tips and tricks, as well as a lot of inspiration to help us become better gardeners.

Facebook: [@Rainpointglobal](https://www.facebook.com/Rainpointglobal)

YouTube: [RainPoint](https://www.youtube.com/RainPoint)

Support: <https://www.rainpointonline.com/pages/support>

