

QUICK START GUIDE

Watch how-to videos on YouTube, search @Rainpoint

01 Download RainPoint Home APP

Search and download **RainPoint Home** on App Store or Google Play. Or scan the QR code to download the APP.



iOS

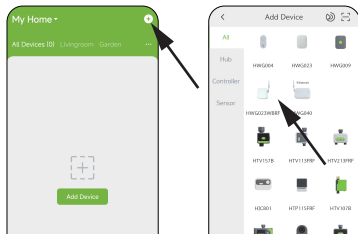
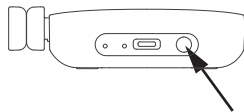


Android



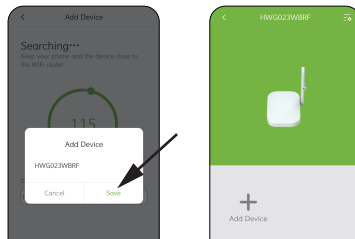
02 Hub Connection

- Find **+** button on the top right corner of the APP's Home Page. Select "**HWG023WBRF**", then enter the Wi-Fi information and go next. **(Only support 2.4GHz WiFi)**

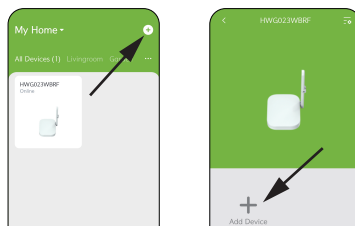


- Plug on the hub near the router, **press and hold the button on the hub for about 5 seconds until it quickly blinks**. Select the check box and go "**NEXT**" to start searching devices.

- When device found, please click **+** to add the device and edit the device name as your like. **Then you successfully add the hub to your APP.**



- After the hub is successfully connected**. Select the **+** button on the top right corner of the APP home page to add device, or you can go to the hub's home page and use "**Sub-devices**" to add devices.

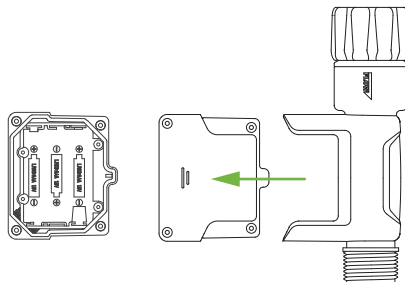
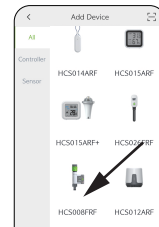


03 Flow Meter Connection

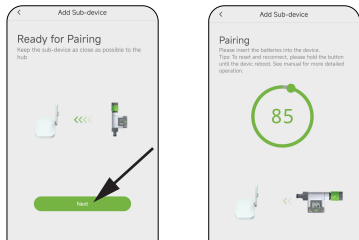
- Find "**HCS008FRF**" to add Water Flow Meter, or press scan QR code and enter into next step.



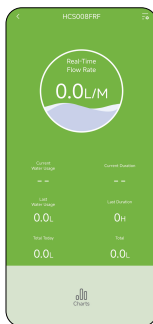
0230008300



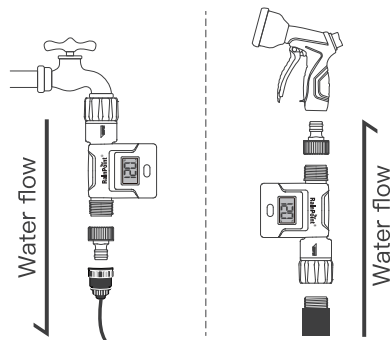
- b. Select "Next" and start searching devices. At the same time, insert 3 new AAA 1.5V alkaline batteries (not included).



- c. After successfully connecting, the real-time water flow rate and other information will show on the device home page.



04 Flow Meter Installation



NOTE:

- To ensure accuracy, please follow the installation instructions shown in the images above when choosing different water flow settings. Please note that the direction of the water flow meter and the connecting thread of the water spray nozzle are different when choosing different water flow directions.
- Be sure to tighten all connectors before use.
- The work distance is within 320 feet in open area. Please do not leave the sensor so far from the hub.

Troubleshooting

Problem	Possible Factors	Some Solutions
Fail to connect with the hub.	<ul style="list-style-type: none"> Wi-Fi signal unstable. Distance between sensor and hub is too far. WiFi is not 2.4GHz. 	<ul style="list-style-type: none"> Wait a little bit and try to connect one more time by reinsert the batteries. Stay closer to the hub while connecting. Please connect 2.4GHz WiFi before connecting to hub.
Lose connection or get offline on the APP.	<ul style="list-style-type: none"> Low battery. Hub disconnected. Wi-Fi signal unstable. 	<ul style="list-style-type: none"> Change brand new batteries. Check the hub and reconnect it if disconnected. Then run the water through out the flow meter a little bit. Reinsert the batteries to get into pairing mode again.

For more troubleshooting/FAQs, please check the user manual; Or visit the website: www.rainpointonline.com/pages/support.

Warranty

RainPoint provides a 1-year limited warranty on this product against manufacturing defects in materials and workmanship. If you contact us to register and activate the warranty, you can get a longer warranty period.

Need Help?

Email: support@rainpointonline.com

Join Us For More Offers

Here are some gardening tips and tricks, as well as a lot of inspiration to help us become better gardeners.

Facebook: @Rainpointglobal

YouTube: RainPoint

Support: <https://www.rainpointonline.com/pages/support>

