

QUICK START GUIDE

Watch how-to videos on YouTube, search @Rainpoint

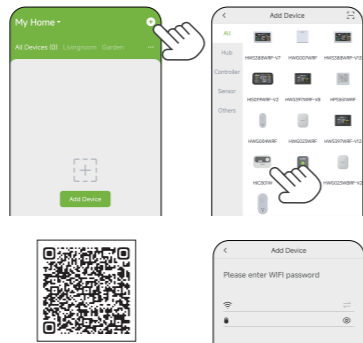
01 APP Download

Search and download **RainPoint Smart+** on App Store or Google Play. Or scan the QR code to download the APP.



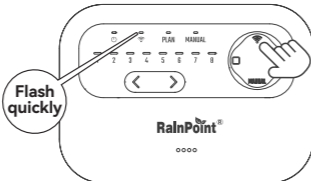
02 Wi-Fi Connection

- a. Add device on the Home page, tap **+** or **"Add Device"** on the Home page, and select the HIC801W. Or press scan QR code and enter into next step.

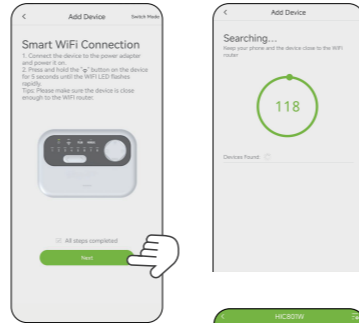


NOTE: You need to make sure that you are using a 2.4GHz WiFi for connecting controller.

- b. Power the irrigation controller and press the **"Wi-Fi"** button for 5 seconds. The Wi-Fi LED will flash quickly and start pairing.



- c. Press **"Next"** to search the device.

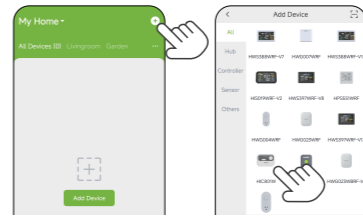


- d. If successful, the LED of Wi-Fi in the controller will always on, and the app will show as the picture.

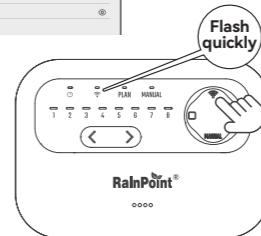


03 AP Connection

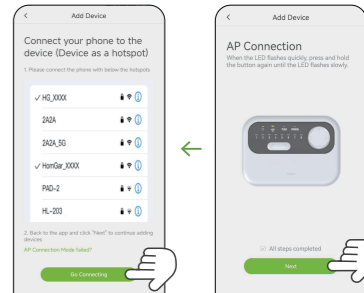
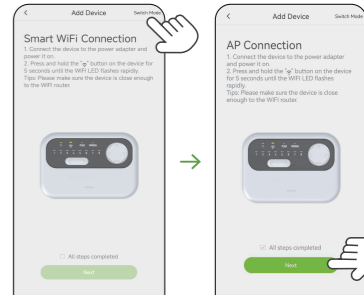
- a. Add device on the Home page, tap **+** or **"Add Device"** on the Home page, and select the HIC801W.



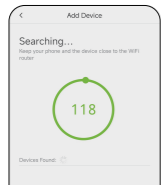
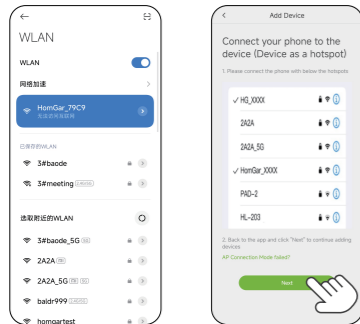
- b. Press the Wi-Fi button for 5 seconds until the Wi-Fi LED flashes quickly, then press **"Next"**.



- c. Press **"Switch Mode"** and enter into AP mode.

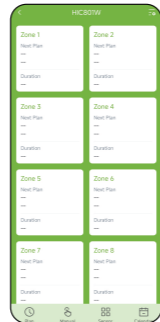


d. Find HomGar XXXX WiFi, and connect.



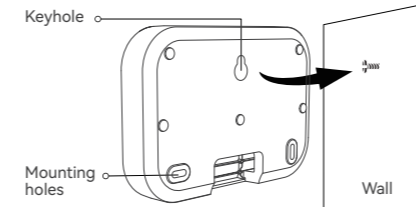
e. If successful, the LED of Wi-Fi in the controller will always on, and the app will show as the picture.

NOTE: If the connection fails, press and hold the controller WiFi connection button until the WiFi indicator blinks quickly and the controller enters the distribution mode again.

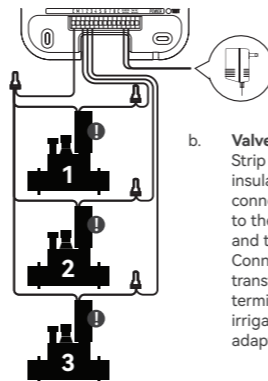


04 Irrigation Controller Installation

a. **Installation**
Mount the screw on the wall and hang the irrigation controller from the screw. If necessary, use the included expansion bolts. After confirming the installation position, use another screw to install through the mounting hole at the bottom of the controller.



NOTE: Please install the irrigation controller near the adaptor or near the Wi-Fi route to ensure the good connection.



b. **Valve Connection**
Strip the appropriate length of insulation from each wire and connect the wires on the valve to the zones, one to the **C** wire and the other to the zones. Connect the wires from the transformer to the **AC** terminals, or power the irrigation controller by **AC** adaptor included.

Note:

- Each zone can only be connected with one wire.
- If there is a main valve, please connect the wires to the **C** and **M** zone on the left side of all zones.

Congratulations, you have completed the installation of the equipment, now please review the instructions and start setting up your irrigation plan.

Troubleshooting

Problems	Possible Factors	Solution
Controller disconnection	<ul style="list-style-type: none"> • WiFi signal is not stable. • Far away from Wi-Fi or too much interference. 	<ul style="list-style-type: none"> • Try to connect again. • Move the controller near Wi-Fi. • Keep away from interference.
Unable to open valve	Wire at the connection is loose.	Tighten the screw and tighten the wire.
Plan doesn't start in time	The rain delay function is activated.	Check if the rain delay function is set.

Warranty

RainPoint provides a 1-year limited warranty on this product against manufacturing defects in materials and workmanship. If you contact us to register and activate the warranty, you can get a longer warranty period.

Need Help?

Email: support@rainpointonline.com

Join Us For More Offers

Here are some gardening tips and tricks, as well as a lot of inspiration to help us become better gardeners.

Facebook: @Rainpointglobal

YouTube: RainPoint

Support:
<https://www.rainpointonline.com/pages/support>

